

SUPPORTING OUR MEMBERS IN 2022

Delivering on our responsibilities



97% of General Insurance claims paid



£1.92m distributed by the NFU Mutual Agency Giving Fund to support local front-line charities



£76,000 paid towards supporting our members with flood resilient repairs



£8.1m voluntary donation to farming unions



3,600 young farmers received farm safety and mental health training through our donations to the Farm Safety Foundation



£247m in Mutual Bonus



More than **£1m** donated by the NFU Mutual Charitable Trust to support national causes



Supported our customers with nearly **13,000** claims resulting from storms Dudley, Eunice and Franklin



Over **£400,000** invested in schemes across the UK designed to tackle rural crime



To find out more visit nfumutual.co.uk/responsiblebusiness



NFU Mutual

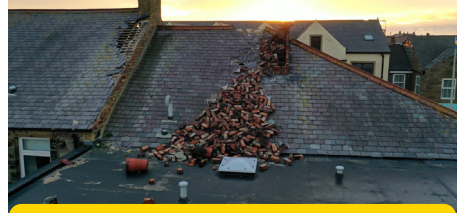
INSURANCE | PENSIONS | INVESTMENTS

SUPPORT WHEN IT REALLY MATTERS...

...our emergency claims response

We understand how devastating it can be when our communities are impacted by weather events.

At NFU Mutual we act quickly to offer customers support, such as same-day payments for emergency purchases, arranging alternative accommodation and getting started on repairs.



“My property suffered significant damage during the storms early last year, including several lost roof tiles and a completely collapsed chimney stack. NFU Mutual took the stress out of the situation. The team acted quickly, and repairs were soon underway.”

Annabel Dobson
Customer with NFU Mutual Alnwick

...helping charities deliver their vital services

We understand these are challenging times, and we have supported charities and organisations working incredibly hard to deliver essential services for our customers and communities.

In 2022, FareShare, the UK’s biggest food redistribution charity received a donation of £100,000 from the NFU Mutual Charitable Trust to support their work to fight food poverty and food waste.

To support our partnership with FareShare, we launched a campaign urging businesses from across the food supply chain to donate edible food waste to the charity. This included reaching out to our network of farming, wholesale, retail, and hospitality customers across the UK to help raise awareness.



“Our partnership with NFU Mutual is extremely valuable to FareShare and a testament to how much more we can achieve working together. Their incredible support has helped redistribute hundreds of thousands of meals, and their recent donation will help us go even further. We have also found new and creative ways to work with our like-minded partner and I’m confident that we’ll continue to make a stronger impact tapping into food industry surplus together.”

Lindsay Boswell
CEO of FareShare

The National Farmers Union Mutual Insurance Society Limited (No.11982). Registered in England. Registered office: Tiddington Road, Stratford-upon-Avon, Warwickshire CV37 7BJ. Authorised by the Prudential Regulation Authority and regulated by the Financial Conduct Authority and the Prudential Regulation Authority. A member of the Association of British Insurers.

Printed on environmentally friendly paper.
AGM-LEA-04/23